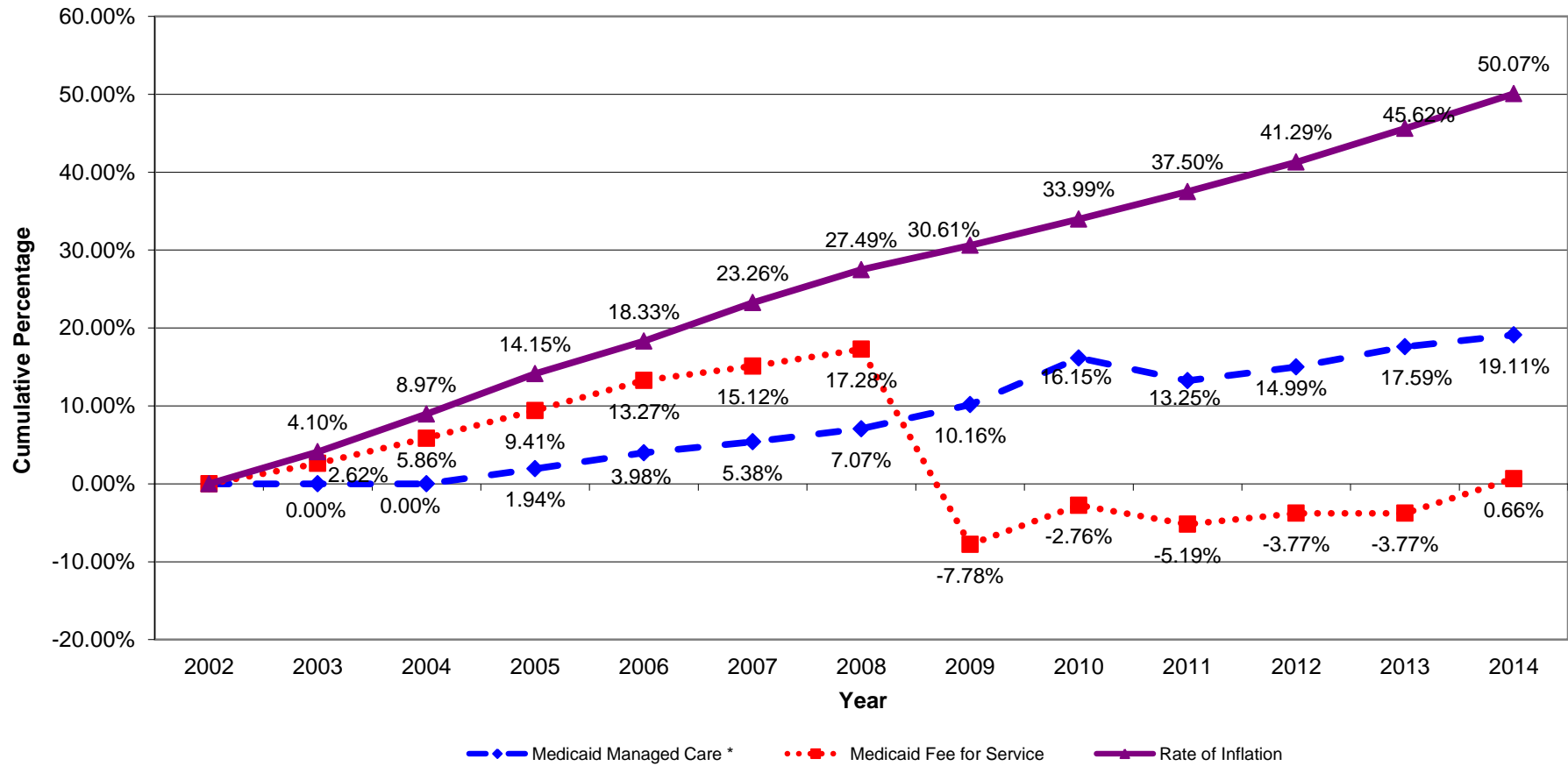


State of Nebraska Inpatient Behavioral Health Medicaid & Magellan Rate Compared to Inflation 2002 - 2014 Cumulative Effect



* Effective September 1, 2013, Nebraska Medicaid moved to Full-Risk Managed Care for all Mental Health and Substance Use Disorder Services.

For FY 2009, Medicaid converted from a single per day rate to multiple per day rates based on length of stay. This change reduced the average IP rate by over 21%.

Rate of Inflation = Average of Consumer Price Index - Medical Care Services and Medicare Economic Index

Medicaid Managed Care Rate = Nebraska Medicaid Managed Care Rate

Medicaid Rate = Nebraska Medicaid Fee-for-Service Rate